

WOCOVA 
7th World Congress on Vascular Access

16-18 OCTOBER MEGARON
2022 ATHENS
GREECE

The 'Medically Necessary Time-Sensitive' (MeNTS) criteria: Can We Apply it to Dialysis Access Surgery?

Presenter: Maryam Jamshaid¹ - Final Year Medical Student

Supervisor: Mr Usman Khalid² - Consultant Transplant and Organ Retrieval Surgeon

¹School of Medicine, Cardiff University, Heath Park, Cardiff, United Kingdom

²Vascular Access Service, Cardiff and Vale University Health Board, Nephrology and Transplant Surgery Directorate, University Hospital of Wales, Cardiff, UK



I have no conflicts of interest to disclose



BACKGROUND



Dialysis access surgery in the UK. ¹⁻³



Impact of the COVID-19 pandemic on elective surgery. ⁴⁻⁵

4-5



**MeNTS
criteria**

“Medically Necessary Time Sensitive” (MeNTS) scoring system. ⁶

THE MeNTS CRITERIA

Patient factors

e.g. age, gender, co-morbidities, COVID-19 exposure

Disease factors

e.g. disease stage, impact of delay, non-operative tx

Procedure factors

e.g. OR time, LOS, blood loss, intubation, team size

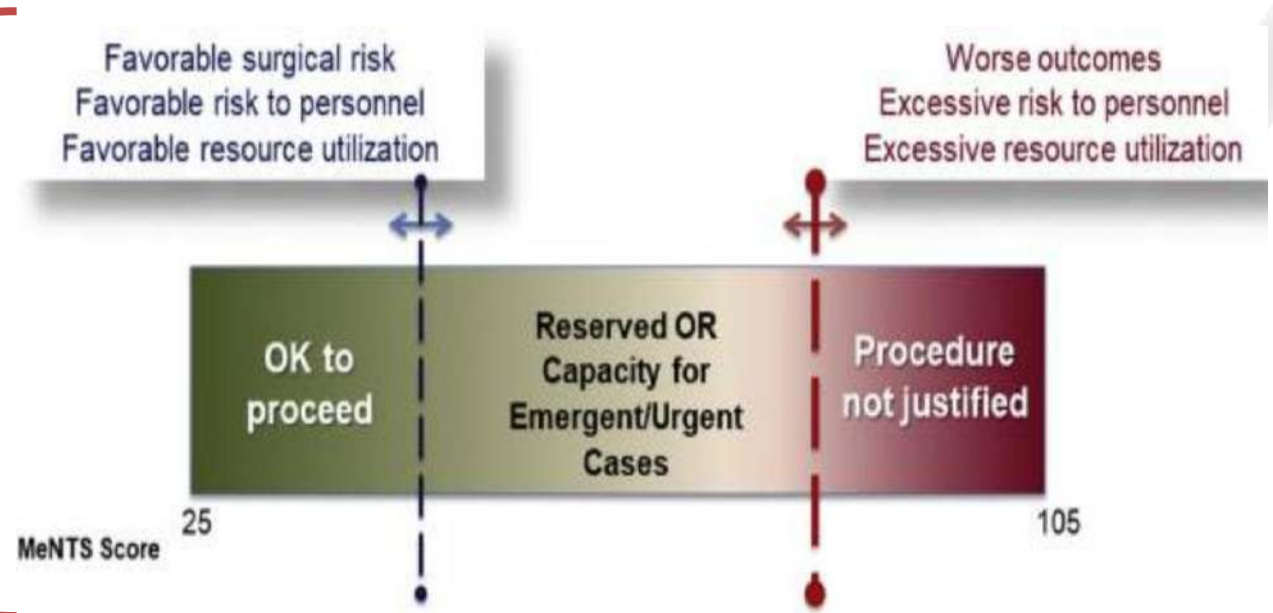
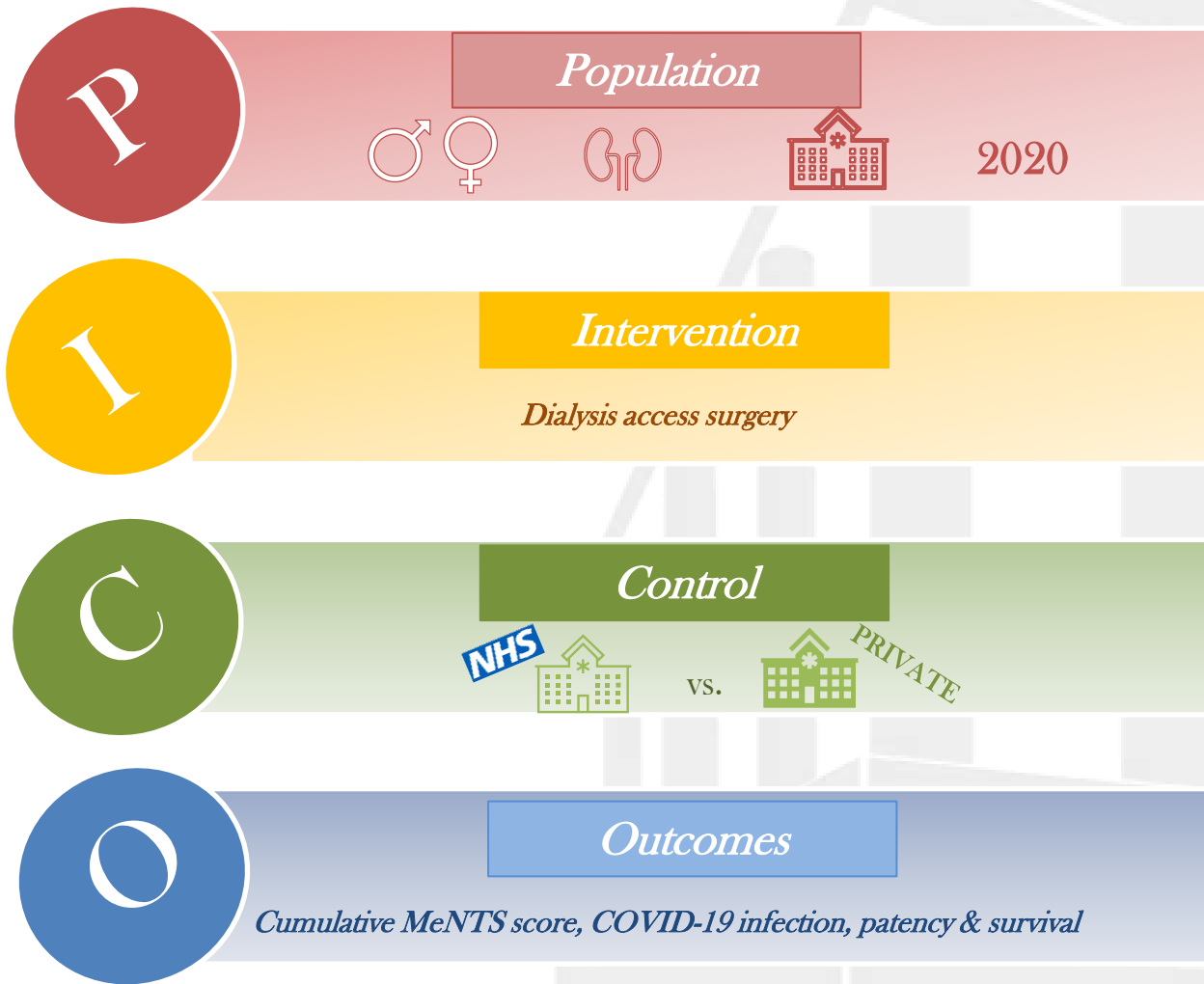


Fig 1. Use of the cumulative medically necessary time sensitive (MeNTS) score.⁷

STUDY QUESTION



METHODOLOGY

- ① **Retrospective records** from March-September 2020 of all dialysis access surgeries at an NHS and private hospital.
- ② MeNTS **scores calculated** and outcomes noted.
- ③ **Statistical analysis** using GraphPad Prism 9.0.0 ⁸

RESULTS- Baseline Characteristics

Outcome	NHS Hospital	Private Hospital
Number of patients	104	40
Median age	64 (range	63 (range
Male: female ratio	3:1	3:1
Co-morbidities backgrounds	91.3 % CVD 4.8 % PVD 42.3 % DM 11.5 % Smokers	95 % CVD 5.0 % PVD 37.5 % DM 20.0 % Smokers
Type of access	<p><i>Arteriovenous fistulae: <u>74.3%</u></i></p> <p><i>PD catheters: <u>22.2%</u></i></p> <p><i>Arteriovenous grafts: <u>3.5%</u></i></p>	

Table 1. Baseline Characteristics of patients included across the NHS and private hospitals.

RESULTS- MeNTS Scores

Mean Patient MeNTS

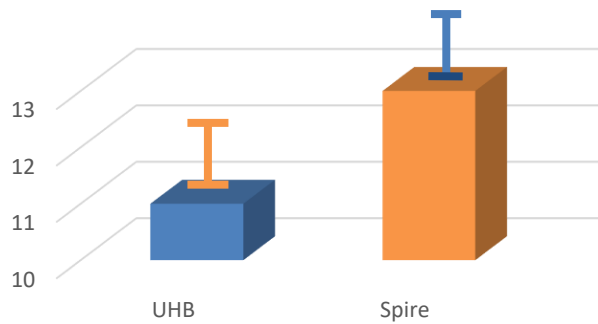


Fig 2. Mean Patient MeNTS score findings.

$P = .171$

Mean Disease MeNTS

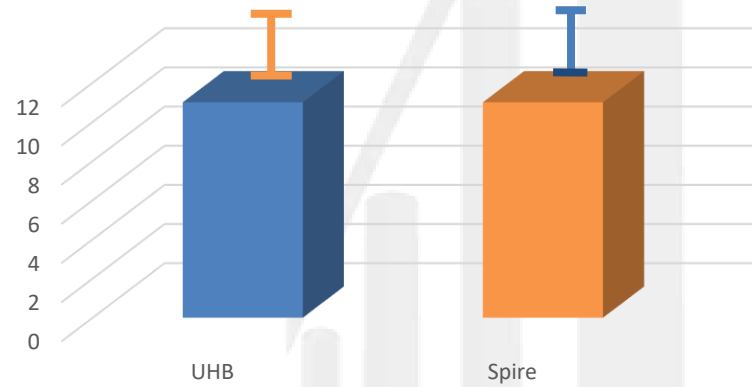


Fig 3. Mean Disease MeNTS score findings.

$P > 0.999$

Mean Procedure MeNTS

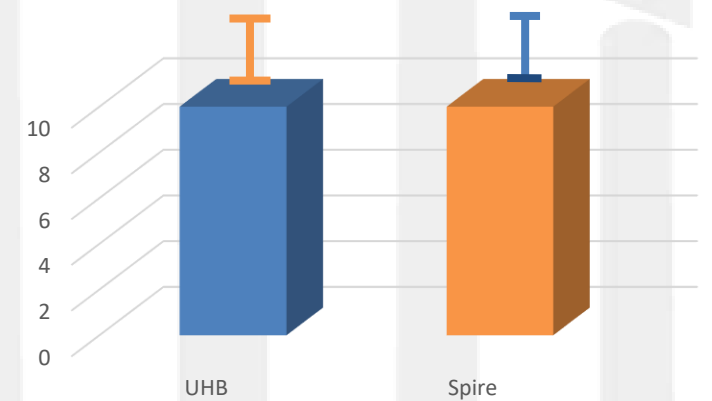


Fig 4. Mean Procedure MeNTS score findings.

$P = .001^*$

 NHS hospital

 Private hospital

RESULTS- Cumulative MeNTS Score

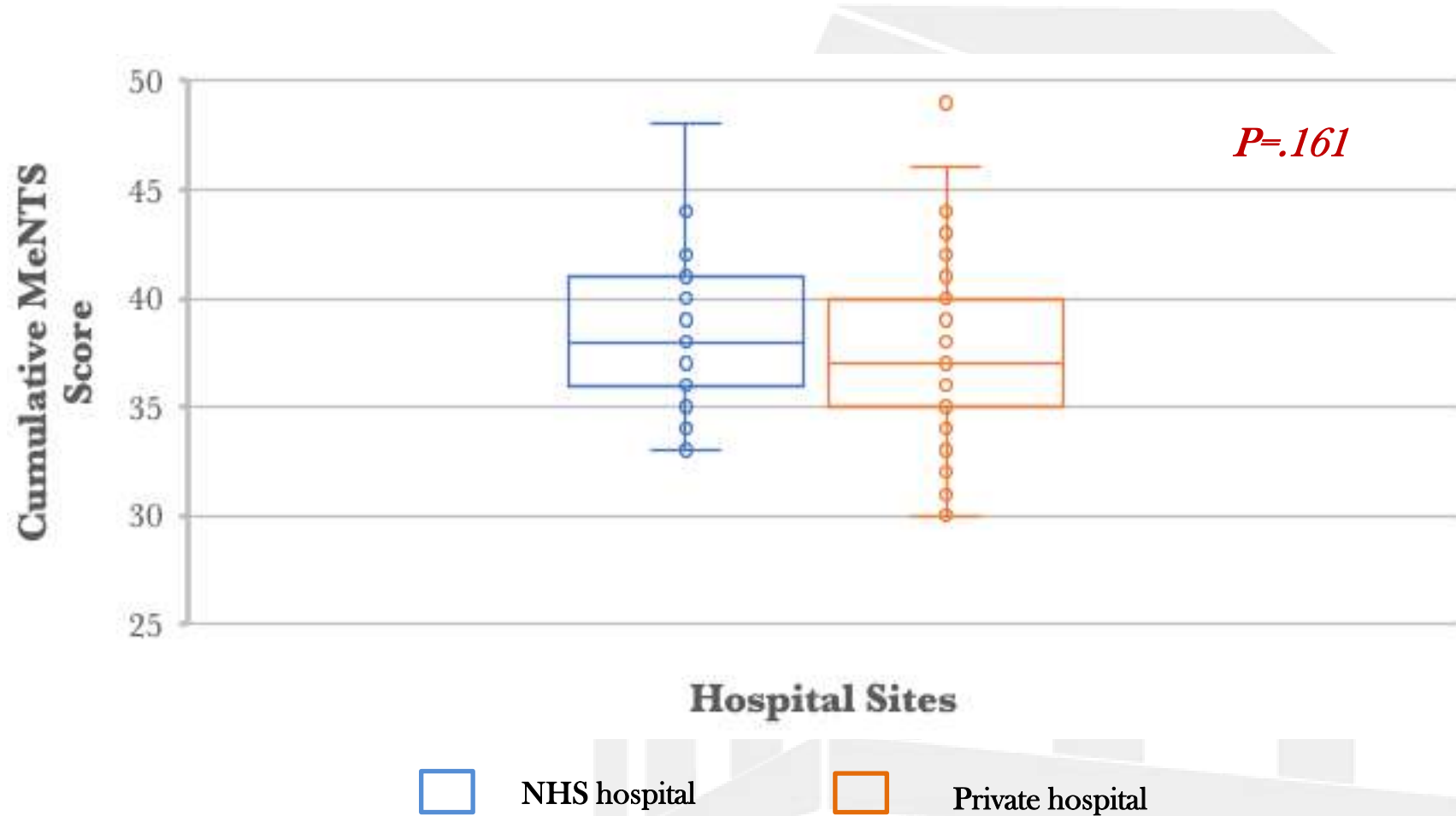


Fig 5. Cumulative MeNTS score findings.

RESULTS- Post-op Outcomes

Outcome	NHS (n=104)	Private (n=40)	p-value
COVID-19 infection	4	0	.576
Early Patency	76.06%	69.74%	.287
Patient Survival	1	0	>.999

Table 2. Post-operative outcomes following dialysis access surgery at NHS and private hospital site.

KEY TAKEAWAYS



Useful triage tool



Post-operative outcomes



Transparency alleviates prioritisation
ethical burden



Thank you

*To my supervisor for his dedicated
support and to the organisers of this
conference*

References

